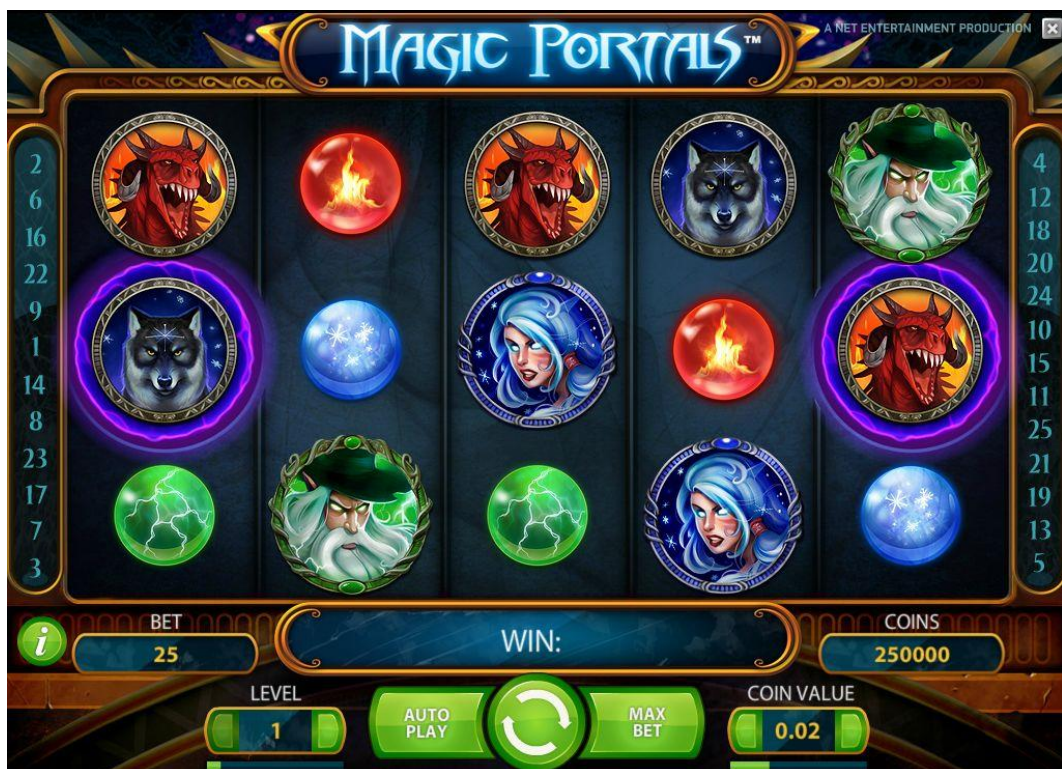


MAGIC PORTALS™

Game Type: Video Slot Game
Return to Player: 96.6%

Magic Portals™ takes players on a mystical journey to a place where wizards and warlocks make magic happen. Magic Portals™ is a 5-reel, 3-row 25-line video slot featuring two Magic Portals that can transform matching symbols into Wilds and activate Free Spins. The exciting thing about the game is that the magic that transforms symbols into Wilds or takes a player to Free Spins can occur on every single spin. More Wilds and Free Spins mean bigger wins! With up to 64 000 coins to be won, Magic Portals™ offers players an exciting adventure on the reels!



GENERAL INFORMATION	
Game Type	Video Slot Game
Reel Type	Spinning Reels
Reels	5 reels, 3 rows, 25 bet lines (fixed)
Default Bet Levels	1-10
Default Coin Values (€)	0.01, 0.02, 0.05, 0.10, 0.20, 0.50, 1
Default Min / Max Bet (€)	0.25 / 250
Default Free Round Values	Bet level 1, 25 bet lines, €0.01 coin value (cost €0.25)
GAME FEATURES	
	<ul style="list-style-type: none"> • Free Spins • Wild Substitutions • Magic Portals feature
PAYOUT	
Return to Player (%)	96.6
Default Maximum Win	€5 000 / 5 000 coins – on a single bet line
Hit Frequency (%)	33.1
RESPONSIBLE GAMING	
Player Limits	<ul style="list-style-type: none"> • Player and casino operator can set the following play limits: Bet @ loss per session, day, week or month. Block all play for a specified period of time. Restrict session play length in minutes. • Playing for real is restricted by player account funds (i.e. cannot play for credit). • (Italy jurisdiction only) Player can initially have a maximum of 1.000 € in the wallet. Since each game is a user session, the player's wallet may exceed this limit during play.
Other	<ul style="list-style-type: none"> • Play for Fun • Variable bet levels/coin values • G4 mode
TECHNICAL INFORMATION	
Game ID	magicportals (basic wallet) magicportals_sw (seamless wallet)
Game Version	1.0
Paytable Version	1.0
Screen Footprint	Optimised for 640x480 and 1024x768
Flash Player	Flash 10 or higher
Deployment	Refer to CasinoModule Help for information about launching CasinoModule games.



Intro Screen



Main Game


Game Theme & Graphics

Magic Portals™ is set in a place where magic can combine with fire, ice and lightning to transform symbols into Wilds or to a place where the spins are free and even more magic exists. In the main game, if two of the same symbols appear in the portals, magic turns all instances of that symbol on the reels Wild. If the matching symbols in the portals are Free Spins symbols, 10 free spins are awarded. In Free Spins, the magic increases with two extra Magic Portals added to the right reel increasing the chances that magic will happen on the reels.

Main Game

Players can select the coin value, number of bet lines and bet level before starting the game round.

- **Game actions.** The buttons on the key pad perform the following game actions:

LINES	Clicking on the left and right arrows increases and decreases the number of bet lines by 1. To increase or decrease faster, the player can click and drag the slider below. (Alternatively, clicking a bet line number in the video display area selects the corresponding number of bet lines.)
LEVEL	Clicking the left and right arrows increases and decreases the bet level (i.e. number of coins per bet line) by 1. To increase or decrease faster, the player can click and drag the slider below.
	Clicking the Spin button starts a game round at the current bet level, the current number of bet lines and the current coin value.
MAX BET	Clicking MAX BET plays the game at 20 bet lines, the highest bet level, and the current coin value.
COIN VALUE	Clicking the left and right arrows increases and decreases the coin value to the next level. To increase or decrease faster, the player can click and drag the slider below.
AUTOPLAY	Clicking AUTOPLAY automatically plays the game for the selected number of rounds.



Wild Symbol after transformation

Wild Symbol and Wild Transformation

In Magic Portals™, Wild symbols appear only after being transformed by the Magic Portals. If matching symbols appear in 2 Magic Portals, both those symbols and any matching symbols on the reel transform into Wild symbols. The Wild symbols substitute for the highest possible winning combination on a bet line.



When two matching symbols appear in the Magic Portals, Wild symbol transformation occurs



The Reels after Wild symbol transformation occurs



Free Spins triggered in Main Game

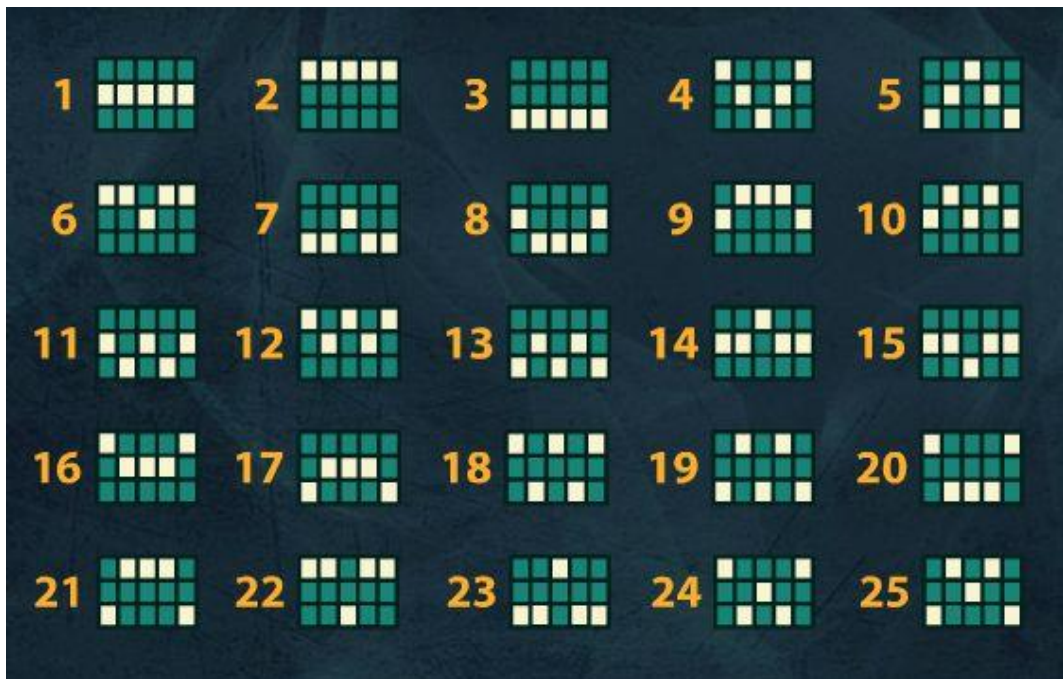
Free Spins & Extra Magic Portals

If 2 Free Spins symbols appear in the Magic Portals, 10 Free Spins are awarded. Once in Free Spin mode, an additional 2 Magic Portals are added to the reels above and below the right Magic Portal meaning that there is an even bigger chance for there to be matching symbols in the portals.



Reels during Free Spins with 2 extra portals

Bet Lines



Payout Summary

GAME RETURN TO PLAYER (RTP)

- Total game: 96.6%
- Main game: 69.6%
- Free Spins: 27.0%

HIT FREQUENCY

- Hit Frequency: 33.1%
- Hit rate into Free Spins: 0.675 (1/148)
- Hit frequency in Free Spins: 58.7%

MAXIMUM PAYOUT

- Main game: €5 000 / 5 000 coins - on a single bet line
- Free spins: €5 000 / 5 000 coins - on a single bet line
- Coinciding: €64 000 / 64 000 coins

Note: The maximum win of a game round is higher than the maximum coinciding win, since a game round may include several spins.

PAYOUT RULES IN MAIN GAME

- A bet line win in coins is equal to the value shown in the PAYTABLE multiplied by the bet level.
- A bet line win in currency is equal to the win in coins multiplied by the coin value.
- Only the highest win per bet line is paid.
- Bet line wins pay if in succession from the leftmost reel to the rightmost reel.
- All wins pay on selected bet lines only, except for wins with Free Spins symbols.
- Simultaneous wins on different bet lines are added.

PAYOUT RULES IN FREE SPINS

- Free Spins are played at the same number of bet lines, bet level, and coin value as the round that activated Free Spins.
- At the end of Free Spins, the total win from Free Spins is added to any wins from the round that activated Free Spins.

Paytable

Magic Portals Wild transformation

In the main game and Free Spins, 2 or more matching symbols that stop in the Magic Portals on reel 1 and 5 transform all instances of that symbol on the reels into Wild symbols (excluding Free Spins symbols).

Substitutes for all symbols except the Free Spins symbol

Only the highest win per bet line is paid.
Bet line wins pay if in succession from leftmost to right.
Malfunction voids all pays.
For more information, see the Game Rules.

Paytable page 1

Free Spins

In the main game and Free Spins, Free Spin symbols appearing in both the left and right Magic Portals activate 10 Free Spins.

Additional Free Spins can be won during Free Spins.

Appearance in the Magic Portal on reel 1 and a portal on reel 5 activates 10 Free Spins.

Only the highest win per bet line is paid.
Bet line wins pay if in succession from leftmost to right.
Malfunction voids all pays.
For more information, see the Game Rules.

Paytable page 2

Symbol	5	4	3
Red-haired woman	500	150	25
Green bearded man	300	125	20
Blue-haired woman	200	100	15

Only the highest win per bet line is paid.
Bet line wins pay if in succession from leftmost to right.
Malfunction voids all pays.
For more information, see the Game Rules.

Paytable page 3

Symbol	5	4	3
Red dragon	175	75	10
White owl	150	50	10
Grey wolf	125	30	10
Red fire ball	100	25	5
Green lightning ball	75	20	5
Blue snowflake ball	50	15	5

Only the highest win per bet line is paid.
Bet line wins pay if in succession from leftmost to right.
Malfunction voids all pays.
For more information, see the Game Rules.

Paytable page 4

Randomisation

RANDOM NUMBER GENERATOR (RNG)

The algorithm used for random number generation (RNG) is Fortuna, a cryptographically secure pseudorandom number generator (PRNG) devised by Bruce Schneier and Niels Ferguson. For more information, see the document Random Number Generation.

The Random Number Generator and its implementation has been tested and approved/certified for randomness according to prevailing industry standards by an accredited, independent, 3rd party test facility.

ALGORITHM FOR A RANDOM REEL POSITION

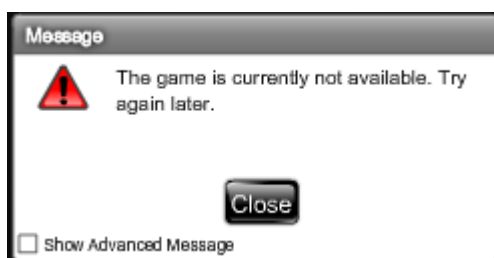
A reel represents an array of symbols where each symbol has an index ("a position").

1. A random number between 0 (zero) and the length of the reel is acquired.
2. The random number is added to the game as "the new reel position to use".

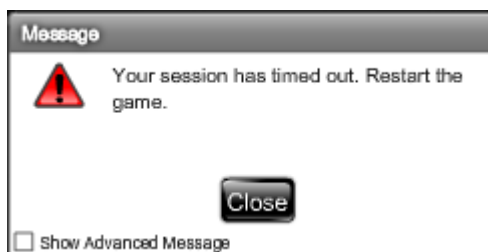
Malfunction Management

If a player attempts to access a game using an invalidated session, (for example, due to inactivity or system restart) an error message is displayed in the game. The player can then log on again and resume game play. The game state is always stored so the player can resume game play exactly where he or she left off.

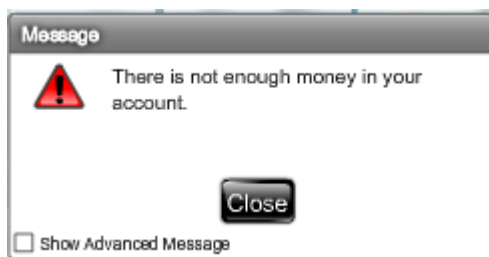
In case of an HTTP error, network timeout or server error a "technical error" message will be displayed to the player and the game will stay in an "unavailable" state until the player reloads the game at a time when the game becomes available.



If a session times out, a "session timeout" message will be displayed to the player and the game will stay in an "unavailable" state until the player reloads the game.



In case of an "out of money" event, an "out of money" message will be displayed to the player and the game will stay in an "unavailable" state until the player reloads the game.



Further information on management of malfunctions is also described in section 3.2.1 of the Gaming Platform (Progetto Della Piattaforma Di Gioco) document. This document provides details on how a player is informed of balance return payments and the technical process.

Information regarding session timeouts and malfunctions is provided to the player via the game rules. Specifically, the player is informed that “In the event of malfunction of the gaming hardware/software, all affected game bets and payouts are rendered void and all affected bets refunded.”

Information to the Player

Players receive a response required message every hour of continuous play: They cannot continue playing unless they respond to the message which provides them with details about the amount bet and won so far during game play.

Players also have access to their game session history and game rules from within the game at all times.

Game Simulation

A demo version of the game is available at <http://www.netent.com/games/>

DOCUMENT VERSION HISTORY

Magic Portals™ Game Sheet
Version 1.1, 2014-05-21

VERSION	WHEN	WHAT
1.1	2014-05-21	New generic layout.
1.0	2013-06-26	First version.