

# JUNGLE GAMES

Game Type: Video Slot Game

Return to Player: 96.5%

Sports-crazed African wildlife is the theme in this 5-reel 20-line video slot. In a special Pick Win feature, the player gets to choose their win type: Take the bonus coins or gamble for an even bigger win in Free spins.



Game Sheet Version: 1.3

Date: 2017-03-14

**NETENT**

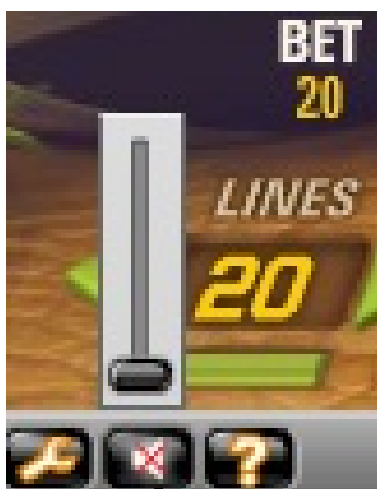
## ABOUT JUNGLE GAMES™

GENERAL INFORMATION	
Game Type	Video Slot Game
Reel Type	Spinning Reels
Reels, Lines	5 reels, 3 rows, 20 bet lines (fixed)
Default Bet Levels	1 - 4
Default Coin Values (€)	0.02, 0.05, 0.1, 0.2, 0.5
Default Min / Max Bet (€)	0.02 / 40
Minimum Free Round Values (Please check your current free round values)	Bet level 1, 20 bet lines, €0.02 coin value (cost €0.02)
GAME FEATURES	
	<ul style="list-style-type: none"> <li>• Free spins with x1-x5 multiplier</li> <li>• Wild Substitution wins with x2 multiplier</li> </ul>
PAYOUT	
Return to Player	96.5%
Default Maximum Win	€100 000 / 200 000 coins – on a single bet line
Hit Frequency	44.90%
RESPONSIBLE GAMING	
Player Limits	<ul style="list-style-type: none"> <li>• Player and casino operator can set the following play limits: Bet @ loss per session, day, week or month. Block all play for a specified period of time. Restrict session play length in minutes.</li> <li>• Playing for real is restricted by player account funds (i.e. cannot play for credit).</li> <li>• (Italy jurisdiction only) Player can initially have a maximum of 1.000 € in the wallet. Since each game is a user session, the player's wallet may exceed this limit during play.</li> </ul>
Other	<ul style="list-style-type: none"> <li>• Play for Fun</li> <li>• Variable coin values</li> <li>• Variable bet levels</li> <li>• G4 mode</li> </ul>
TECHNICAL INFORMATION	
Game ID	junglegames (basic wallet) junglegames_sw (seamless wallet)
Display Resolution	1024 x 768
Aspect Ratio	4:3
Technology	Flash - 10.0.0 or higher
Deployment	Refer to CasinoModule Help for information about launching CasinoModule games.

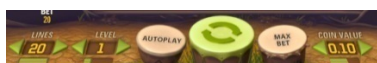
## GAME DESIGN



Video slot elements



New sound control



New look keypad with slide controls and AUTOPLAY button



Bet lines



Realistic looking reel spin

### Game Theme & Graphics

The game display comprises three main elements - video display area, keypad area, and game panel.

- **Video display area.** The main game reels and, the Free spin reels are displayed in this upper area. In addition, the PAYTABLE button and information about the maximum possible coin win are shown.
- **Keypad area.** Breaking from the traditional NetEnt keypad, this new-look keypad features slide selectors for bet lines, bet levels and coin values. The spin and MAX BET buttons are present, and the new AUTOPLAY button replaces the AUTO button that is found in the traditional NetEnt game panel.
- **Game panel.** The game panel at the bottom houses the buttons for the game settings, audio, and the game rules. This area also displays the player's account information and alternates between showing the available cash, current bet, amount won, and player mode (when in Play for Fun mode). Just like the keypad, the game panel has also changed: Clicking on the sound button displays a slide control, and the button itself still retains the ability to mute all sounds when clicked.


### Main Game

Players can select the coin value, number of bet lines, and bet level before spinning the reels.

- **Game rounds.** When the player clicks the spin button, the amount bet is debited from the current credit (available coins and credit). The reels automatically come to rest. Alternatively, when G4 mode is disabled, the player can stop the reels by clicking the spin button.
- **Game results.** Players can win on any of the bet lines on which they bet. The game highlights which lines are winners and how much has been won on each line. The total winnings are added together and shown in the Win box. The amount won is added to the cash and displays in the game panel.
- **Reel Spin Acceleration.** Anticipation of winning is enhanced with a reel spin acceleration that starts when 2 scatters appear on the reels.

## Game Actions.

The buttons on the key pad perform the different game actions:

	Clicking on the left and right arrows increases and decreases the bet level (that is, number of coins per bet line) by 1. To increase or decrease faster, the player can click and drag the slider below.
	Clicking on the left and right arrows increases and decreases the number of bet lines by 1.
	Clicking this button starts a game round at the current bet level, coin value and bet lines.
	Clicking this button changes the bet level to 4, and starts a game round at the current coin value with all bet lines selected.
	Clicking on the left and right arrows increases and decreases the coin value to the next level.
	Players can open the Autoplay options window by clicking on this button.



Wild symbol

## Wild Substitution

Jungle Games has an animated wild symbol when displayed on a winning bet line.

- **Substitution.** Wild symbols substitute for any other symbol - except scatter - to complete winning bet lines. Winning bet lines using wild symbols will have their coin value double.
- **Wins as a regular symbol.** The wild acts as a regular symbol.



Pick win display

## Pick Win Feature

3 or more scatters will start the Pick Win feature. Players are presented with the option to choose one of the following:

The Free spin amounts and multipliers behind the scatters that were not selected are revealed after the player has made their choice.



Select a scatter



Coins – mystery coin win displayed



Free spins – Number of Free spins and multiplier selected



Free spins – Final win presentation

## Coins.

The player is instructed to select one of the winning scatters. Once selected, the coin value counts up until the final mystery amount is reached. A presentation window appears congratulating the player on their coin win. The hidden coins behind the scatters that were not select are revealed.

	Number of additional Free spins
	3 Scatters
	30
	18
	14
	10
	8

## Paytable

Main slot winnings are paid out depending on the symbols displayed on a bet line when the reels come to a stop. For a



Paytable page 1 of 3



Paytable page 2 of 3



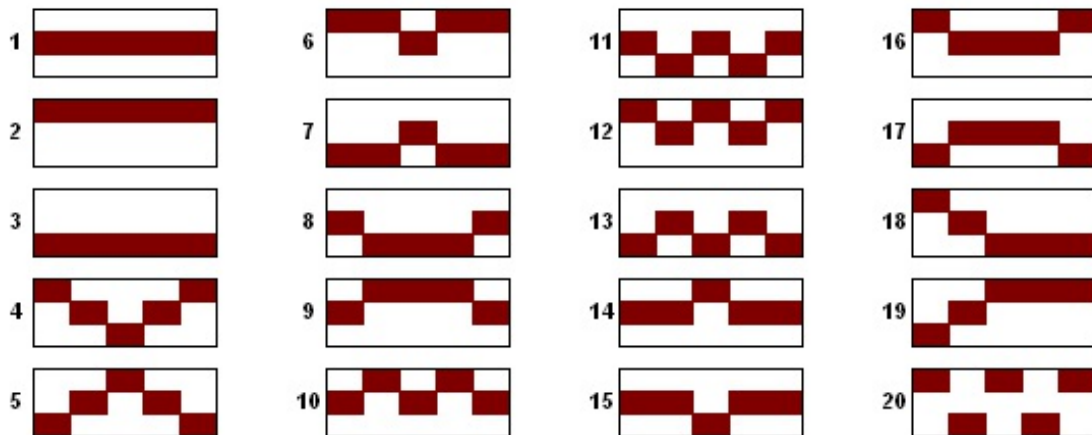
Paytable page 3 of 3

combination of regular symbols to be a winning combination, at least 1 of the symbols must be displayed on the first slot reel, and the remaining symbols must be next to each other on the enabled bet line. The in-slot paytable displays the payout for each winning combination and bonus feature.

Players click PAYTABLE to display the paytable page which shows the payout and rules for all of the symbols.

To return to the game, players click the return to game arrow.

### Bet Lines



## PAYOUT

### Payout Summary

#### GAME RETURN TO PLAYER (RTP)

- Total game: 96.6%
- Main game - any bet line: 58.4%
- Scatter Win: 16.9%
- Free spins - any win: 10.7%
- Free spins - bet line: 8.3%
- Free spins - scatter: 2.4%

#### HIT FREQUENCY

- Total - any win: 44.9%
- Main game - any bet line: 41.2%
- Scatter win: 7.1%

#### MAXIMUM PAYOUT

---

**Note:** The maximum win of a game round may be higher than the maximum coinciding win, since a game round may include several spins.

---

#### PAYOUT RULES IN MAIN GAME

- Scatter wins pay total bet x multiplier shown in the paytable.
- Wild symbol substitutes for all symbols except scatters symbols.

#### PAYOUT RULES IN FREE SPINS

- Players are given the option to select either Free spins or a Bonus coin win.
- Maximum multiplier in Free spins is x5.
- Additional Free spins can be won during Free spins. Same multiplier applies.

#### BONUS COIN WIN

- The current bet level and bet line values are used to calculate the Bonus coin win.
- The more the player bets, the higher are the win possibilities.

## Paytable

JUNGLE GAMES™		POWERED BY NET ENTERTAIN	
	5 1000 4 250 3 25		5 750 4 100 3 25
	5 500 4 75 3 15		5 250 4 75 3 15
	5 200 4 50 3 15	1  2  3  4  5  6  7  8  9  10 11  12  13  14  15  16  17  18  19  20	
Only the highest win per active bet line paid.		Bet line wins pay if in succession from leftmost to right.	

Paytable page 1

JUNGLE GAMES™		POWERED BY NET ENTERTAIN	
	5 150 4 50 3 10		5 150 4 25 3 10
	5 100 4 15 3 5		5 100 4 15 3 5
	5 125 4 25 3 10		5 100 4 15 3 5
Only the highest win per active bet line paid.		Bet line wins pay if in succession from leftmost to right.	

Paytable page 2



# JUNGLE GAMES™ POWERED BY NET ENTERTAIN

---



5	400
4	20
3	5
2	2

**SCATTERS**

Scatter wins pay total bet x multiplier.  
3 or more Scatter symbols activate the Pick Win feature.  
Free spins pay win x multiplier (1-5) displayed in the game.  
Free spins won during Free spins have the same multiplier.

---

**WILD**

Wild symbol substitutes for all symbols except scatter symbols.  
Wild wins are doubled (x2) when substituting other symbols.



5	10000
4	2500
3	250

**WILD**

---

Only the highest win per active bet line paid.

Bet line wins pay if in succession from leftmost to right.

Paytable page 3

## ADDITIONAL INFORMATION

### Randomisation

#### Random Number Generator (RNG)

The algorithm used for random number generation (RNG) is Fortuna, a cryptographically secure pseudorandom number generator (PRNG) devised by Bruce Schneier and Niels Ferguson. For more information, see the document Random Number Generation.

The Random Number Generator and its implementation has been tested and approved/certified for randomness according to prevailing industry standards by an accredited, independent, 3rd party test facility.

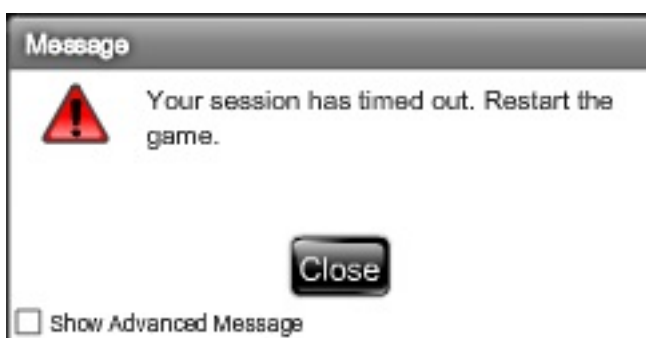
### Malfunction Management

If a player attempts to access a game using an invalidated session, (for example, due to inactivity or system restart) an error message is displayed in the game. The player can then log on again and resume game play. The game state is always stored so the player can resume game play exactly where he or she left off.

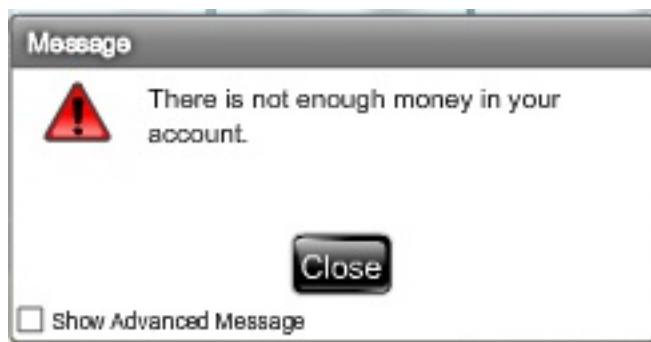
In case of an HTTP error, network timeout or server error a "technical error" message will be displayed to the player and the game will stay in an "unavailable" state until the player reloads the game at a time when the game becomes available.



If a session times out, a "session timeout" message will be displayed to the player and the game will stay in an "unavailable" state until the player reloads the game.



In case of an "out of money" event, an "out of money" message will be displayed to the player and the game will stay in an "unavailable" state until the player reloads the game.



(Italy jurisdiction only) Further information on management of malfunctions is also described in section 3.2.1 of the Gaming Platform (Progetto Della Piattaforma Di Gioco) document. This document provides details on how a player is informed of balance return payments and the technical process.

Information regarding session timeouts and malfunctions is provided to the player via the game rules. Specifically, the player is informed that "In the event of malfunction of the gaming hardware/software, all affected game bets and payouts are rendered void and all affected bets refunded."

### Information to the Player

Players receive a response required message every hour of continuous play: They cannot continue playing unless they respond to the message which provides them with details about the amount bet and won so far during game play.

Players also have access to their game session history and game rules from within the game at all times.

### Game Simulation

A demo version of the game is available at <http://www.netent.com/games/>

## DOCUMENT VERSION HISTORY

VERSION	WHEN	WHAT
1.3	2017-03-14	Added Free Spins information
1.2	2014-05-13	New generic layout.
1.1	2013-05-20	Updated layout.
1.0	2013-05-10	First version.