

GOLDEN SHAMROCK™

Game Type: Video Slot Game

Return to Player: 96.4%

Every day can be St Patrick's day with this 5-reel, 20-line video slot. With expanding Wilds and variable Free spins and multipliers, Golden Shamrock is sure to give a 'feel good' vibe.



Game Sheet Version: 1.2

Date: 2014-05-28

NETENT

ABOUT GOLDEN SHAMROCK™

GENERAL INFORMATION

Game Type	Video Slot Game
Reel Type	Spinning Reels
Reels, Lines	5 reels, 3 rows, 20 bet lines (fixed)
Default Bet Levels	1 - 10
Default Coin Values (€)	0.01, 0.02, 0.05, 0.1, 0.2, 0.5
Default Min / Max Bet (€)	0.01 / 100
Minimum Free Round Values (Please check your current free round values)	Bet level 1, 20 bet lines, €0.01 coin value (cost €0.01)

GAME FEATURES

- Free spins: Multiplier x 1-5
- Wild Substitution
- Expanding Wild

PAYOUT

Return to Player	96.4%
Default Maximum Win	€100 000 / 200 000 coins – on a single bet line
Hit Frequency	39.34%

RESPONSIBLE GAMING

Player Limits	<ul style="list-style-type: none"> • Player and casino operator can set the following play limits: Bet @ loss per session, day, week or month. Block all play for a specified period of time. Restrict session play length in minutes. • Playing for real is restricted by player account funds (i.e. cannot play for credit). • (Italy jurisdiction only) Player can initially have a maximum of 1.000 € in the wallet. Since each game is a user session, the player's wallet may exceed this limit during play.
Other	<ul style="list-style-type: none"> • Play for Fun • Variable coin values • Variable bet levels • G4 mode

TECHNICAL INFORMATION

Game ID	goldenshamrock (basic wallet) goldenshamrock_sw (seamless wallet)
Display Resolution	1024 x 768
Aspect Ratio	4:3
Technology	Flash 8 or higher
Deployment	Refer to CasinoModule Help for information about launching CasinoModule games.

GAME DESIGN



Video slot elements



Rows and reels, bet lines

Game Theme & Graphics

Golden Shamrock comprises three main elements—video display area, keypad and game panel.

- **Video display area.** The main game reels and the free spin reels are displayed in this upper area. In addition, the PAYTABLE button and information about the maximum possible coin win are shown.
- **Keypad area.** The keypad area shows the current bet level (i.e. the number of coins wagered per bet line), the current number of bet lines, the available cash in coins, and the current coin value. This area also contains the main game buttons used to select the bet level, bet lines, coin value, and to start the game.
- **Game panel.** The game panel at the bottom houses the buttons for the game settings, audio, and autoplay menus, and the game rules. This area also displays the player's account information and alternates between showing the available cash, current bet, amount won, and player mode (when in Play for Fun mode).


Main Game

Players can select the coin value, number of bet lines and bet level before spinning the reels.

- **Game rounds.** When the player clicks the Spin button, the amount bet is debited from the current credit (available coins and cash). The reels automatically come to rest, or can be stopped by the player by the clicking the spin button (only when G4 mode is disabled).
- **Game results.** Players can win on any of the bet lines on which they bet. The game highlights which lines are winners and how much has been won on each line. The total winnings are added together and shown in the Win box. The amount won is added to the cash and displays in the game panel.
- **Reel Spin Acceleration.** Anticipation of winning is aroused with a reel spin acceleration that starts when two scatters appear on the reels.

Game actions.

The buttons on the key pad perform the different game actions.

	Clicking this button increases the bet level (i.e. number of coins per bet line) by one.
	Clicking this button increases the number of bet lines by one. (Alternatively, clicking a bet line number in the video display area selects the corresponding number of bet lines.)
	Clicking the Spin button starts a game round at the current bet level.
	Clicking this button changes the bet level to 10, and

	starts a game round with all bet lines selected.
	Clicking this button increases the coin value to the next level.



Regular Wild symbol

Wild Substitution

The Wild symbol substitutes for all symbols except scatters and bonus symbols.

Note: Only the highest winning combination on a bet line wins.

- **Expanding wild symbol.** The animated Wild symbol on reels 2, 3, or 4 expands to cover the whole reel when completing winning bet lines.



Scatter win for Free spins

Scatters and Free spins

Golden Shamrock features scatter wins and clickable scatter symbols that reveal the number of Free spins and win-multiplier awarded.

- **Scatter wins.** The game pays out on three (3) or more scatters. These wins pay the multiplier (displayed in the game) multiplied by the total bet.
- **Free spins feature.** The Free spins feature is activated when players get three (3) or more scatter symbols. “Select a scatter” text prompts players to click one of the symbols. The selected symbol opens and the number of Free spins and Free spin win-multiplier to be awarded is displayed; for example, 8 free spins, 1x multiplier.
- **Free spin mode.** Players click the Start Free Spins button to enter Free spin mode. Free spins are played with the same bet level and number of lines as the game that triggered the Free spins. A dynamic sign informs players how many Free spins remain, and the current multiplier applied to Free spin wins. This is updated each time the Free spins feature is re-triggered and new Free spins or multiplier are won.
- **Free spin wins.** All wins pay the win multiplied by the win multiplier (1-5) displayed in the game. This excludes additional Free spins. At the end of the Free spins the total winnings are added to the player’s cash.
- **Re-triggered free spins.** Two (2) or more scatters during a Free spins round, activate additional Free spins or multiplier. Players click a scatter symbol to reveal the number of additional Free spins or multiplier. Additional Free spins or multipliers are added to the current Free spins or multiplier (up to a maximum of 5x multiplier).



Selected scatter to start Free spins

Payout

Main slot winnings are paid out depending on the symbols displayed on a bet line when the reels come to a stop. For a combination of regular symbols to be a winning combination, at least 1 of the symbols must be displayed on the first slot reel, and the remaining symbols must be next to each other on the enabled bet line. The in-slot paytable displays the payout for each winning combination and bonus feature.



Paytable page 1

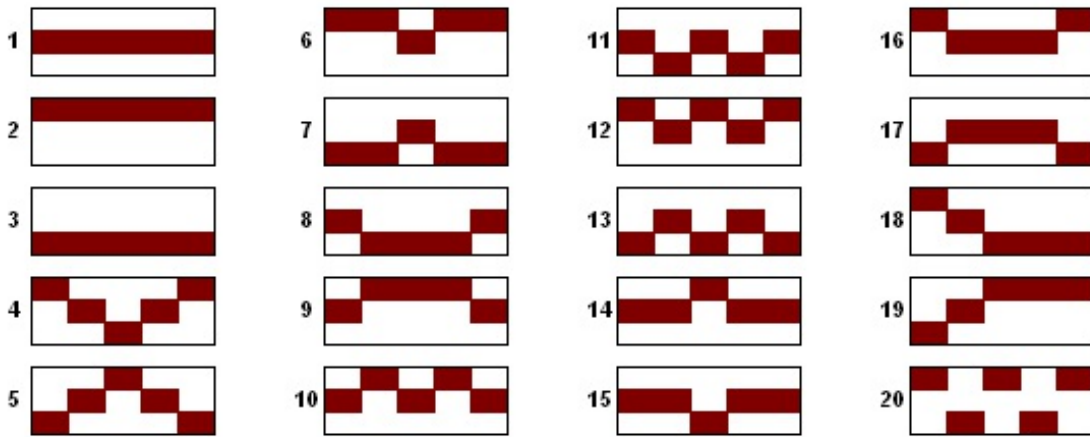


Paytable page 2

Players click PAYTABLE to display the paytable which shows the payout and rules for the wild and scatter symbols. There is also payout information for medium and low symbol wins.

To return to the game, players click the return to game arrow.

Bet Lines



PAYOUT

Payout Summary

GAME RETURN TO PLAYER (RTP)

- 96.4%

HIT FREQUENCY

- Any win: 39.3%
- Into feature - Free Spins: 1/92

MAXIMUM PAYOUT

Note: The maximum win of a game round may be higher than the maximum coinciding win, since a game round may include several spins.

PAYOUT RULES IN MAIN GAME

- Medium and low value symbols pay when they appear in an unbroken sequence on a bet line from left to right.
- Bet line wins are multiplied by the number of coins bet per bet line.
- Wild symbol substitutes for all symbols except scatters.

PAYOUT RULES IN FREE SPINS

- Number of Free spins won and Free spin win multiplier vary depending on the scatter selected by the player when entering Free spins.
- Additional Free spins or multiplier are given if 2 or more scatters are shown on a bet line.
- Multipliers are added together to a maximum value of 5.

Paytable



Paytable page 1

	5 4000 4 200 3 50 2 10		5 2000 4 150 3 40 2 7		5 1500 4 125 3 30 2 6		5 1000 4 75 3 20 2 5
	5 150 4 50 3 10		5 125 4 40 3 8		5 100 4 30 3 7		
	5 75 4 25 3 6		5 50 4 20 3 5		5 30 4 15 3 3		

1 2 3 4 5 6 7 8 9 10 11 12 13 14 15 16 17 18 19 20

Only the highest win per active bet line paid. Bet line wins pay if in succession from leftmost to right.

POWERED BY NET ENTERTAINMENT™

Paytable page 2

ADDITIONAL INFORMATION

Randomisation

Random Number Generator (RNG)

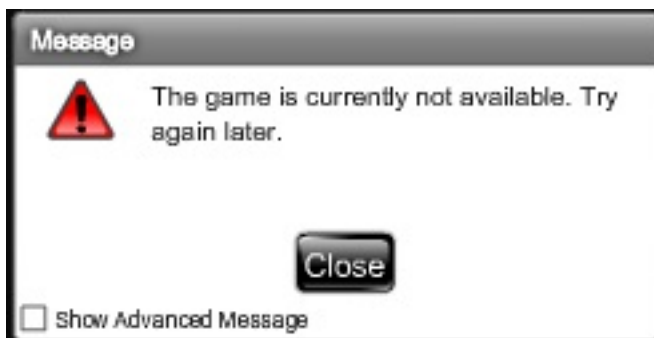
The algorithm used for random number generation (RNG) is Fortuna, a cryptographically secure pseudorandom number generator (PRNG) devised by Bruce Schneier and Niels Ferguson. For more information, see the document Random Number Generation.

The Random Number Generator and its implementation has been tested and approved/certified for randomness according to prevailing industry standards by an accredited, independent, 3rd party test facility.

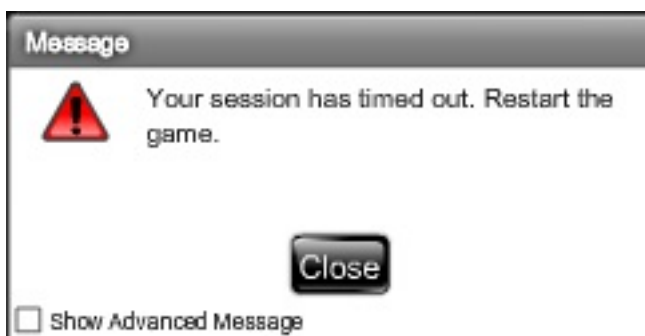
Malfunction Management

If a player attempts to access a game using an invalidated session, (for example, due to inactivity or system restart) an error message is displayed in the game. The player can then log on again and resume game play. The game state is always stored so the player can resume game play exactly where he or she left off.

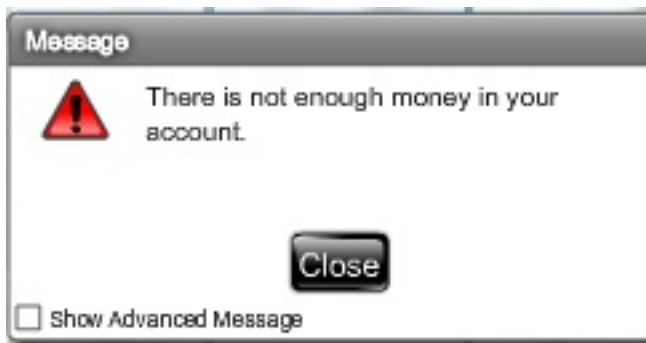
In case of an HTTP error, network timeout or server error a "technical error" message will be displayed to the player and the game will stay in an "unavailable" state until the player reloads the game at a time when the game becomes available.



If a session times out, a "session timeout" message will be displayed to the player and the game will stay in an "unavailable" state until the player reloads the game.



In case of an "out of money" event, an "out of money" message will be displayed to the player and the game will stay in an "unavailable" state until the player reloads the game.



(Italy jurisdiction only) Further information on management of malfunctions is also described in section 3.2.1 of the Gaming Platform (Progetto Della Piattaforma Di Gioco) document. This document provides details on how a player is informed of balance return payments and the technical process.

Information regarding session timeouts and malfunctions is provided to the player via the game rules. Specifically, the player is informed that "In the event of malfunction of the gaming hardware/software, all affected game bets and payouts are rendered void and all affected bets refunded."

Information to the Player

Players receive a response required message every hour of continuous play: They cannot continue playing unless they respond to the message which provides them with details about the amount bet and won so far during game play.

Players also have access to their game session history and game rules from within the game at all times.

Game Simulation

A demo version of the game is available at <http://www.netent.com/games/>

DOCUMENT VERSION HISTORY

VERSION	WHEN	WHAT
1.2	2014-05-28	New generic layout.
1.1	2013-05-20	Updated layout
1.0	2009-11-30	First version.